

# Facial Treatment



## The Fundamental Treatment 90min 18,000yen (Member 16,200yen)

Prepare, preserve, restore the indispensable base to regain and retain beautiful skin. The Fundamental Treatment is a customized treatment adapted to skins individual needs. All the ingredients of a 100% customized treatment. Gentle make-up removal followed by a purifying peel to prepare the skin for the application of a mask and modeling adapted to each zone of the face.

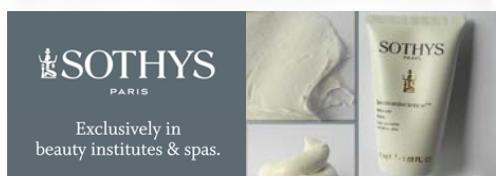
## Pore cleansing Treatment 60min 15,000yen (Member 13,500yen)

Specifically targeting the pore, this total pore refiner treatment eliminates impurities and tightens skin grain to bring out lighter and fresher complexion. The skin immediately becomes softer, lighter and feels cleaner.

## Seasonal Care 90min 19,000yen (Member 17,100yen)

A breath of oxygen and minerals restores luminosity and nourishes your skin. The pink clay scrub with a cocktail of minerals purifies the skin. Your intoxicating experience finishes with a massage and peel-off mask. This treatment will provide you your daily dose of anti-oxidants for a brighter, more youthful complexion.

**\*Government Tax excluded.**





## IRIDIUM Specials



### Secrets de Sothys ————— 180min 55,500yen(Member 50,000yen)

The most luxurious anti-aging skin care course from Sothys, backed by our sixty years of anti-aging skin care processes research. Plant components are carefully selected to fight against signs of aging and skin stress. This hour of pleasurable indulgence with the satiny smooth touch of the massage cream will leave you totally relaxed with the radiance of a deeply nourished and satin-smooth skin.

### Takumi ～匠～ \*Exclusively for men ——— 150min 47,000yen(Member 42,300yen)

Designed to relieves fatigues of long-lasting desk work or flights, this is a combination of Sothys's "Homme" facial that targets specifically men's skin condition and a deep tissue massage to relax tired muscles and joints to regain energy. Takumi will prepare you for that important presentation or dinner.

### Zen ～禅～ ————— 150min 47,000yen(Member 42,300yen)

Relax and unwind by improving your lymphatic circulation with a facial treatment deeply approaches the skin and by improving your lymphatic circulation with a body massage using utmost pure and natural essential oil.

### Rin ～凜～ ————— 120min 31,500yen(Member 28,400yen)

A combination of a classic facial treatment and foot massage come together in a single appointment to create the ultimate in spa experiences. The pampering begins with a relaxing foot bath and foot massage, and then followed by a customized facial treatment adapted to individual skin needs. Imagine continuous relaxation, saving time and the hassle of switching rooms, or even tables!

**\*Government Tax excluded.**



**SOTHYS**  
PARIS

Exclusively in  
beauty institutes & spas.

